



Richland County Project Closeout Procedures

SESWA SPRING WORKSHOP

PRESENTER: SYNITHIA WILLIAMS

RICHLAND COUNTY STORMWATER MANAGER

About Richland County, SC

Named for the “rich land” for indigo and cotton plantations

Population of over 400,000

Capital county

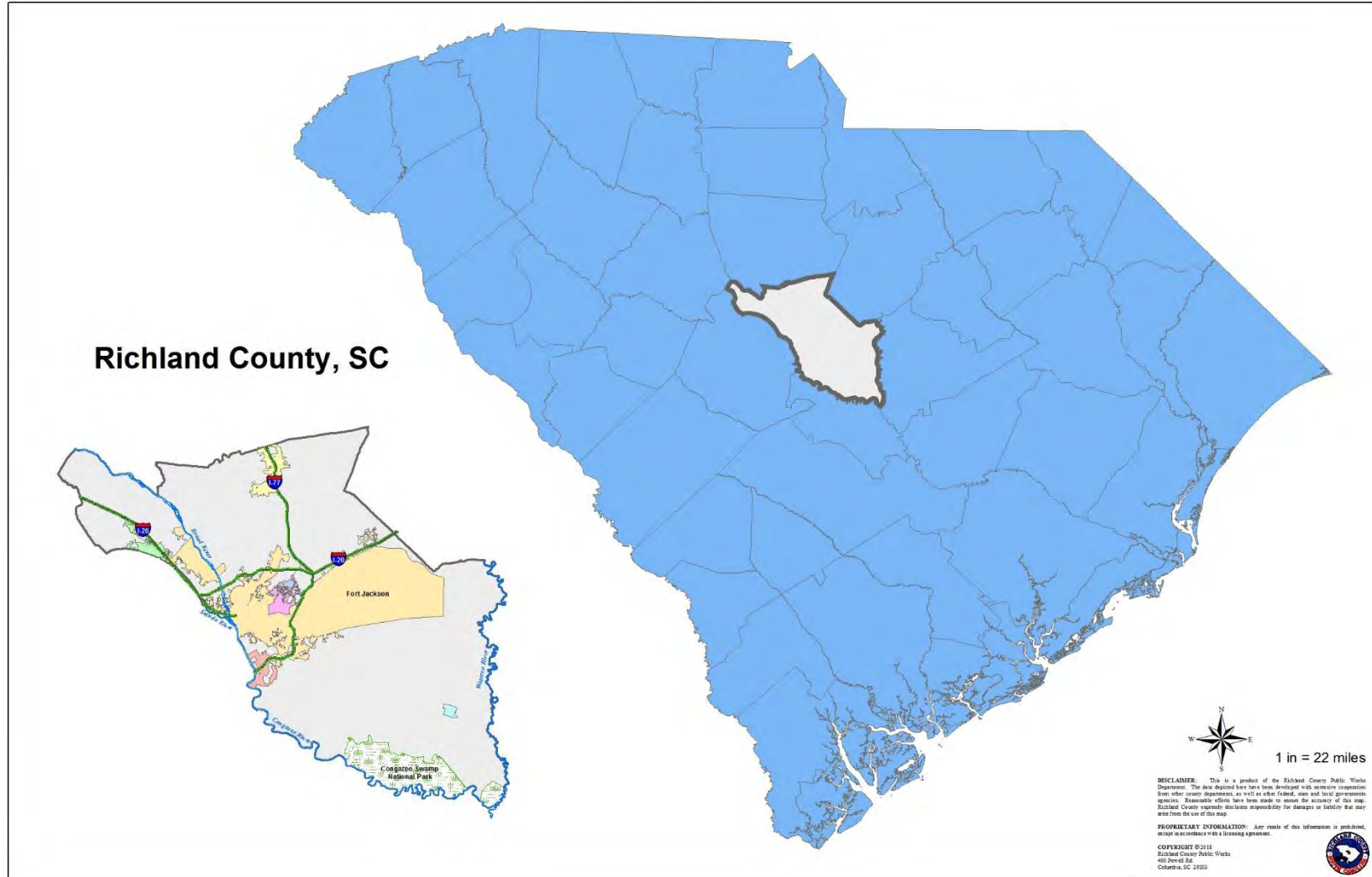
11 Council members

5 Municipalities

Stormwater maintenance IGAs with all municipalities

NPDES co-permittee with two municipalities

Richland Renaissance



Stormwater Management Program

Part of the Public Works Department

Phase I MS4

Nine Full Time Employees

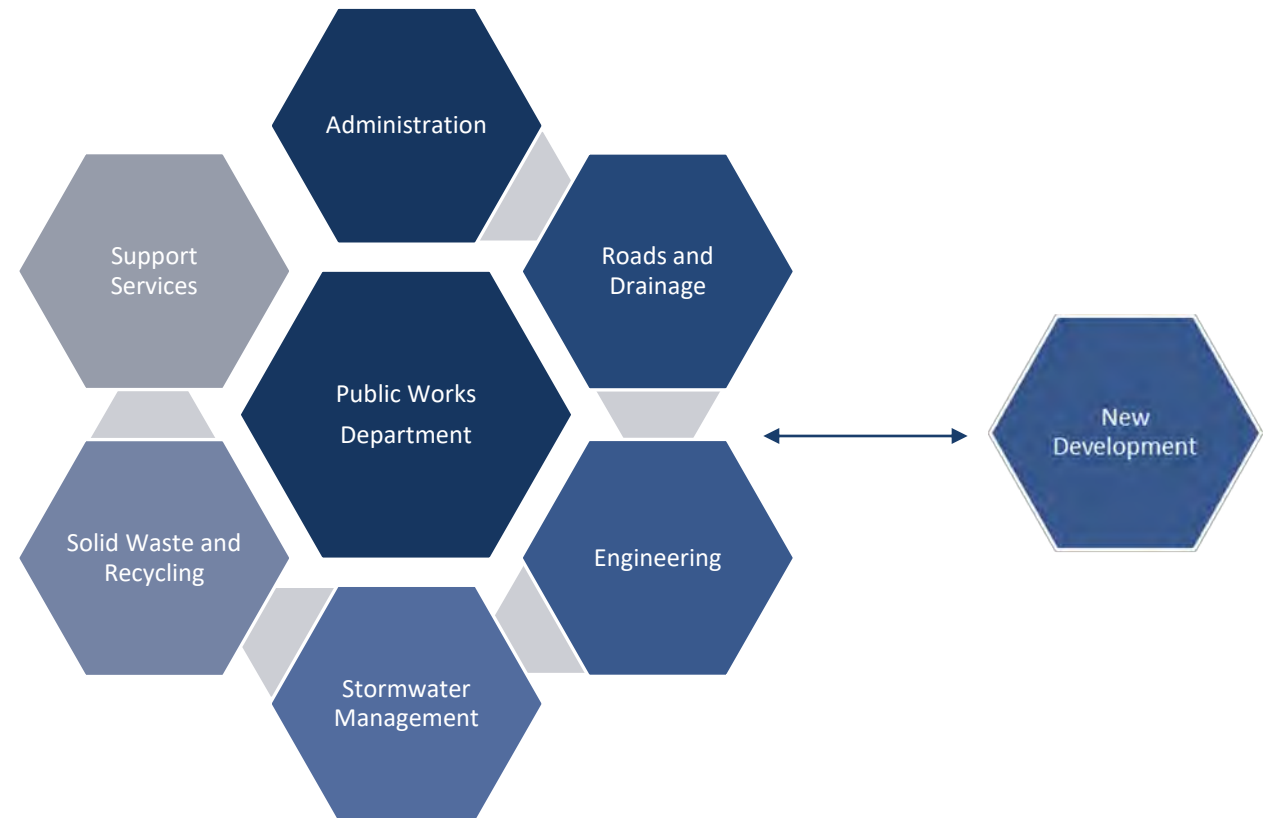
- -Going for 10

Two dedicated to post-construction inspections

48 County owned ponds

120+ private ponds

WQU/Curb Screens



Final Inspection

New Development

- Schedule final inspection and walk-through
- Verify drainage infrastructure
- Accept close-out package

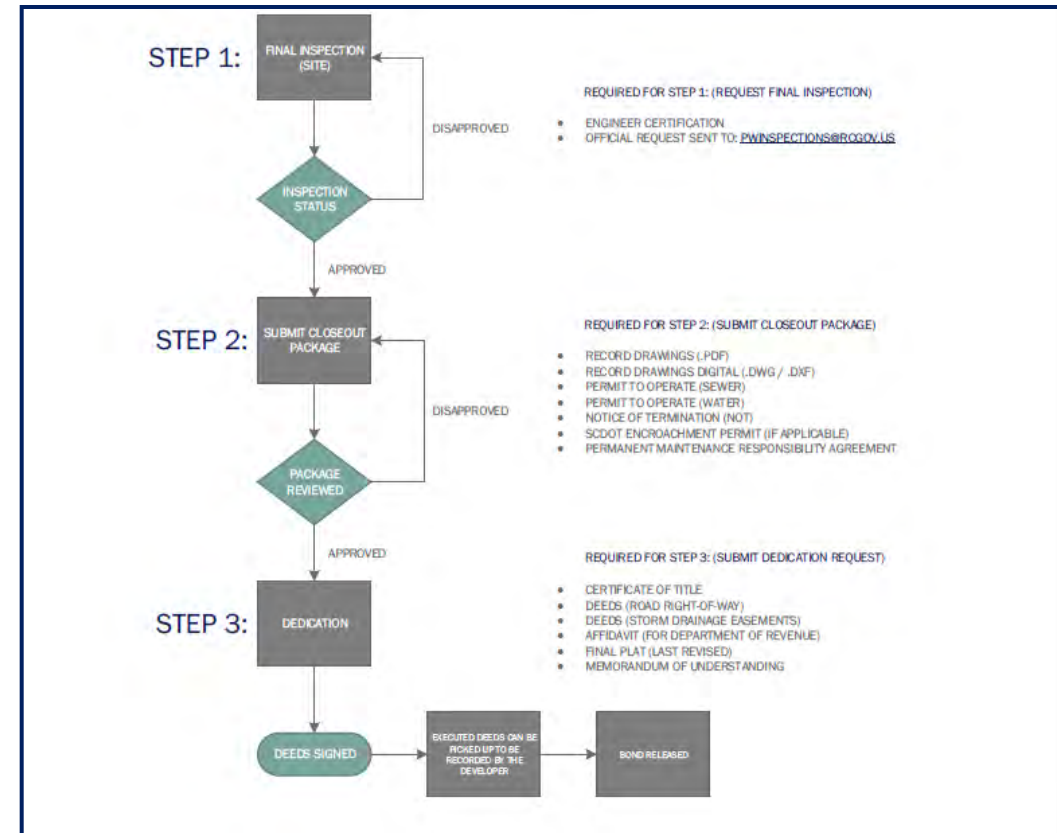
Stormwater Division

- Assist with final inspection
- Verify pond and other BMPs
- Update post construction inventory

Roads and Drainage

- Verify shape of the road

One Year Warranty



Project Closeout

Packet to County Engineer

- Deeds/ROW
- Storm drain easements
- Final plat
- Digital as-builts
- Recommendation for approval

Deed recorded/warranty starts

- Revising this process





Digital Submittals

eTrackit

Projects tracked from start to finish

GIS mapping of drainage infrastructure

Commercial Projects

- As-builts submitted for the pond
- Pond/BMP maintenance agreement
- Stormwater updates inventory
- Inspect commercial pond within 30 days



Wrap-Up



Project closeout is a multi-department effort
Stormwater Division has minimal involvement
Digital submissions helps with project management