

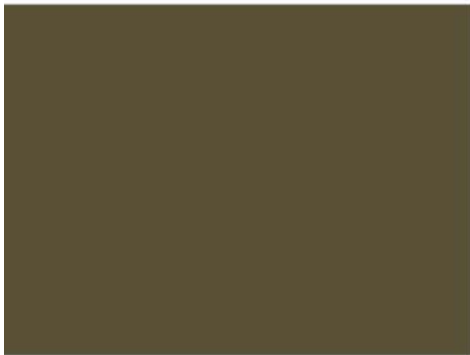
gwinnettcounty



Department of  
**Water Resources**



**Public Ed to the MAX!!!**

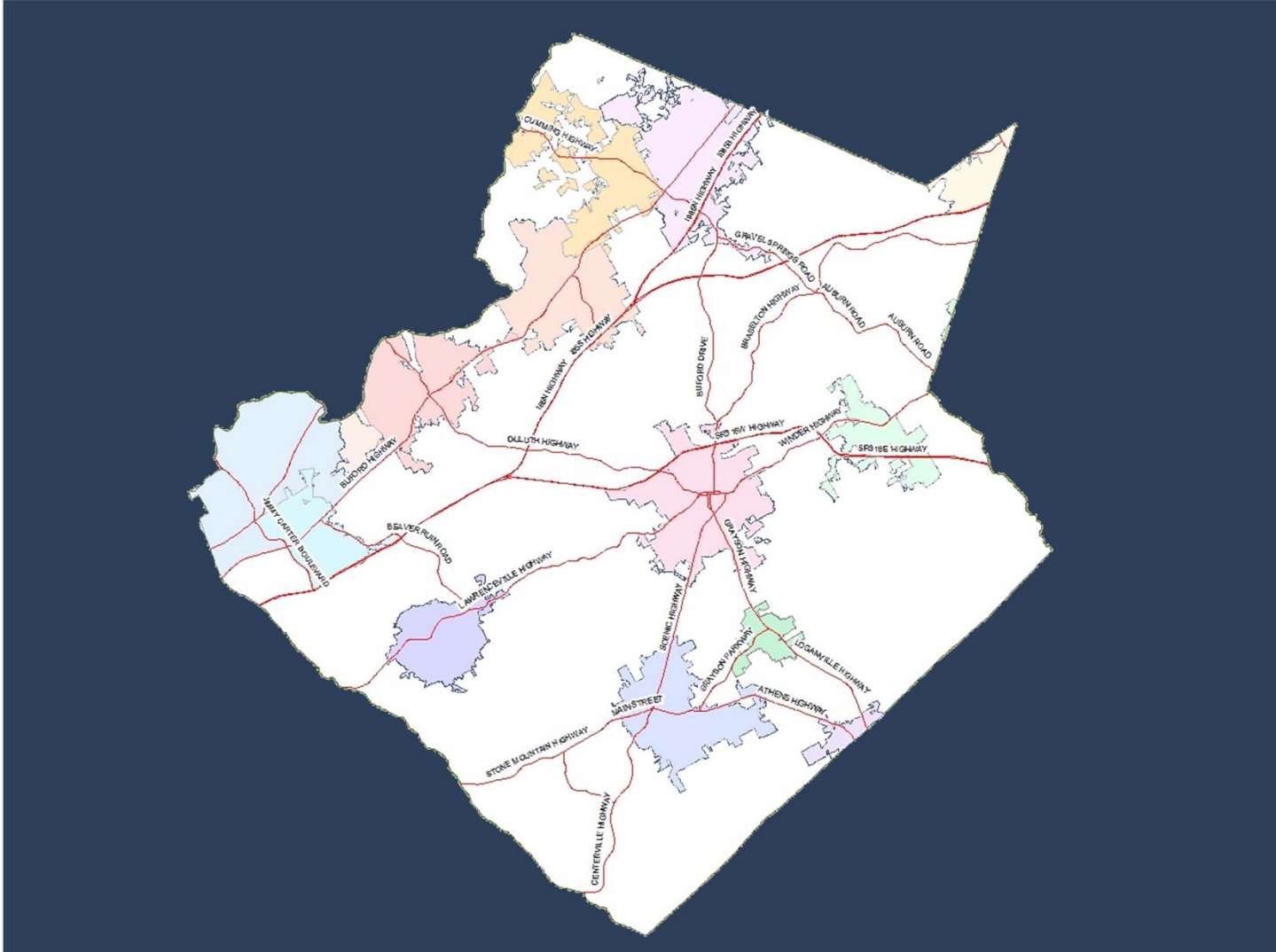


Gwinnett County,  
Georgia

# Big County



gwinnettcounty



# Big County



- 437 mi<sup>2</sup>
- 2,000+ miles of stormwater pipe
- > 800,000 people
- 1 employee for Stormwater education
  - Support from management
  - Partnerships
  - Planning ahead



gwinnettcounty

# Gwinnett's Max Effect

- Partnerships
- Workshops
- Portable Presentations



# Gwinnett's Max Effect

- Partnerships
- Workshops
- Portable Presentations



# Gwinnett's Max Effect

- Partnerships
- Workshops
- Portable Presentations



The collage includes several elements:

- gwinnettcounty** logo in the top left.
- A photo of a worker in a yellow vest and hard hat working in a trench.
- gwinnettcounty** logo in the middle left.
- A photo of a large body of water, likely a reservoir or lake.
- Department of Water Resources** text.
- Stormwater 101 Illicit Discharges** text.
- A photo of a worker in a yellow vest and hard hat working on a road.
- A photo of a worker in a yellow vest and hard hat working on a road.
- A photo of a worker in a yellow vest and hard hat working on a road.
- gwinnettcounty** logo in the bottom left.
- A photo of a worker in a yellow vest and hard hat working on a road.
- Presented by: John Butler, Public Ed and Outreach** text.
- gwinnettcounty** logo in the top right.
- Stormwater 101** text.
- Edgemoor North and East Hill Home Owner's Association Meeting** text.
- September 9, 2013** text.
- Stormwater 101** text.
- Material Handling and Storage of Cleaning and Pool Chemicals** text.

# Public Ed Partnerships

- Regional Partnerships
  - Associations, Committees, Groups, Clubs...
  - Networking opportunities
  - Sharing designs and resources
    - Brochures
    - Posters
  - Regional Competitions
    - Essay Contest
    - Video Contest



# Public Ed Partnerships

gwinnettcountry

- UGA Extension Service
  - Public Speakers
  - Referrals
  - Consultation
  - Expertise
  - Training
    - Professional
    - Citizen





# Public Ed Partnerships

gwinnettcountry

- UGA Extension Service
  - Public Speakers
  - Referrals
  - Consultation
  - Expertise
  - Training
    - Professional
    - Citizen



# Public Ed Partnerships

gwinnettcountry

- UGA Extension Service
  - Public Speakers
  - Referrals
  - Consultation
  - Expertise
  - Training
    - Professional
    - Citizen





# Public Ed Partnerships

- Solid Waste
  - Household Hazardous Wastes
  - Publications
  - Collection Days



gwinnettcounty



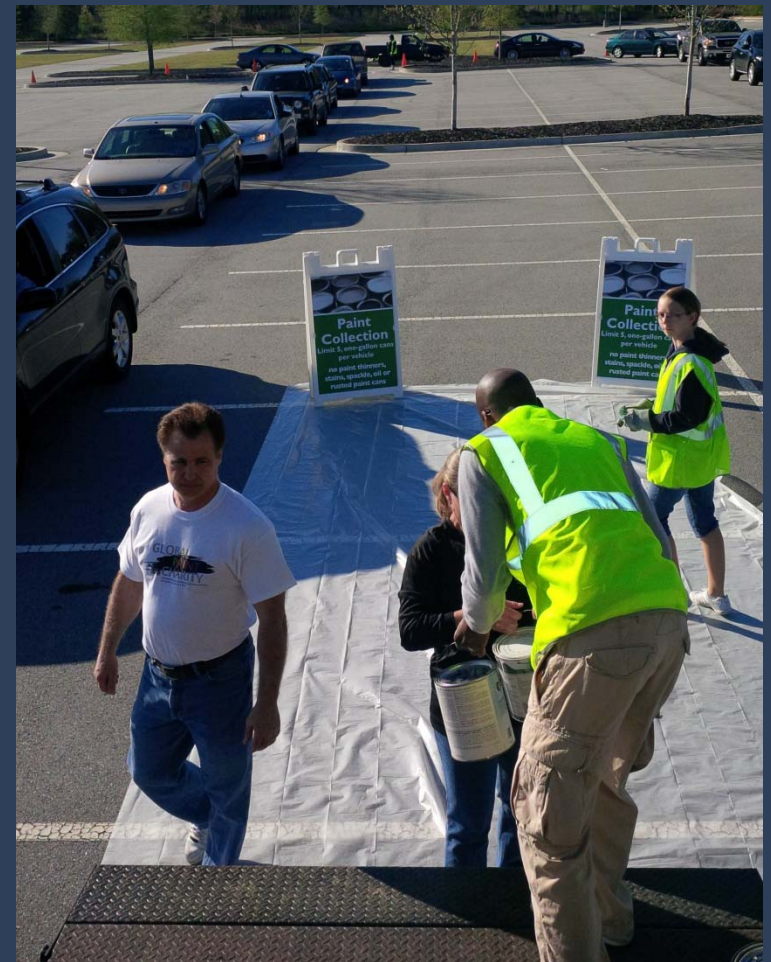


# Public Ed Partnerships

- Solid Waste



gwinnettcounty





# Public Ed Partnerships

- Solid Waste



gwinnettcounty



# Public Ed Partnerships

- Gwinnett Clean and Beautiful  
– Adopt-a-Stream



**gwinnett**county

# Public Ed Partnerships

- Gwinnett Clean and Beautiful
  - Adopt-a-Stream



**gwinnett**county

# Public Ed Partnerships

- Gwinnett Clean and Beautiful
  - Adopt-a-Stream
  - Stream Cleanups



**gwinnett**county



# Public Ed Partnerships

- Gwinnett Clean and Beautiful
  - Adopt-a-Stream
  - Stream Cleanups



gwinnettcounty

# Public Ed Partnerships

- Gwinnett Clean and Beautiful
  - Adopt-a-Stream
  - Stream Cleanups
  - Classroom Education



**gwinnett**county

# Portable Presentations

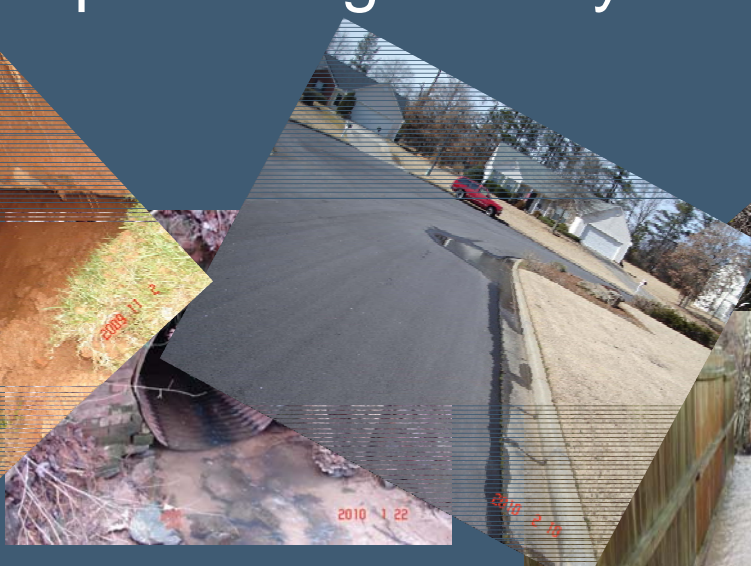
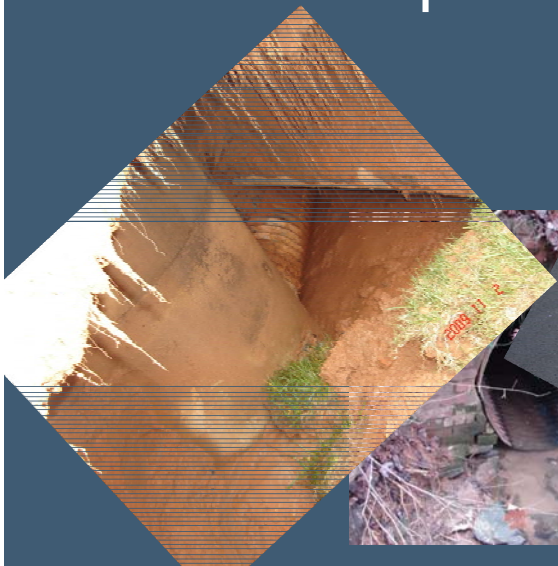
- Equipment:
  - Projector
  - Projection screen (optional)
  - Lap top computer
  - Presentation clicker
  - Extension cord
  - Flash drive



# Portable Presentations

gwinnettcountry

- Software:
  - Microsoft Power Point
  - Picture manager
    - Take lots of pictures in the field
    - Keep an image library



# Portable Presentations

- Canned Presentations

- Illicit Discharge
- Infrastructure
- Utility

- Advertising

- Website
- Water Bill
- Newsletter(s)
- Email blast

- Park kiosks and community bulletin boards



# Portable Presentations

gwinnettcountry

- Take it on the road
  - HOA meetings
  - Community group meetings
  - Church groups
  - Municipal Training



# Workshops

- Location
  - Municipal Facilities
  - Churches
  - Community Centers



gwinnettcounty



2012.03.08 19:43

# Workshops

- Location
  - Municipal Facilities
  - Churches
  - Community Centers



gwinnettcounty





# Workshops

- Location
  - Municipal Facilities
  - Churches
  - Community Centers



gwinnettcounty



2015.01.15 19:21

# Workshops



gwinnettcounty

- Location
  - Municipal Facilities
  - Churches
  - Community Centers
- Advertising
  - Website
  - Water Bill
  - Newsletter(s)
  - Email blast
  - Park kiosks and community bulletin boards



# Workshops

**FREE!!!**

- Advertising
  - Website
  - Water Bill
  - Newsletter(s)
  - Email blast
  - Park kiosks and community bulletin boards

Department of Water Resources • Free Workshop!  
**Rain Gardens**

February 12, 2015 • 7:00pm – 8:30pm  
Gwinnett Justice and  
Administration Center Auditorium  
75 Langley Drive, Lawrenceville

Learn how to select plants for your own rain garden and help protect our waterways from nonpoint source pollution. Attendees from unincorporated Gwinnett County, city of Lilburn, or city of Peachtree Corners can qualify for a maximum 5 percent credit toward their stormwater utility fee for the following year.

Presented by: Robert Brannen, Gwinnett Extension

Pre-register by emailing your name, address, and phone number to [dwrswreg@gwinnettcountry.com](mailto:dwrswreg@gwinnettcountry.com) or calling 678.376.7193 (press 5).



**gwinnett**county

# Workshops

- Topics
  - Lawn Care with IPM
  - Fall Gardening and Composting
  - Rain Gardens
  - Septic Tank Maintenance
  - Detention Pond Maintenance
  - HHW
  - FOG
  - Backyard Stream Restoration
  - And More!



gwinnettcounty

# Wrap Up

gwinnettcounty

- Share the load with partners
  - You facilitate the events/articles
  - Let the experts create presentations and do research
  - Take advantage of other departments events
- Can your presentation...in a good way!
  - Pre-made presentation for various topics
  - Travel to the interested parties
- Offer free workshops
  - Work with partners to create expert workshops
  - Offer at a central location
  - Rotate the schedule

Questions???

**gwinnett**county



*Thank You!*

John Butler  
Gwinnett County  
Department of Water Resources  
[john.butler@gwinnettcounty.com](mailto:john.butler@gwinnettcounty.com)  
678.376.6914

