

BMP Project Closeout Lexington Case Study

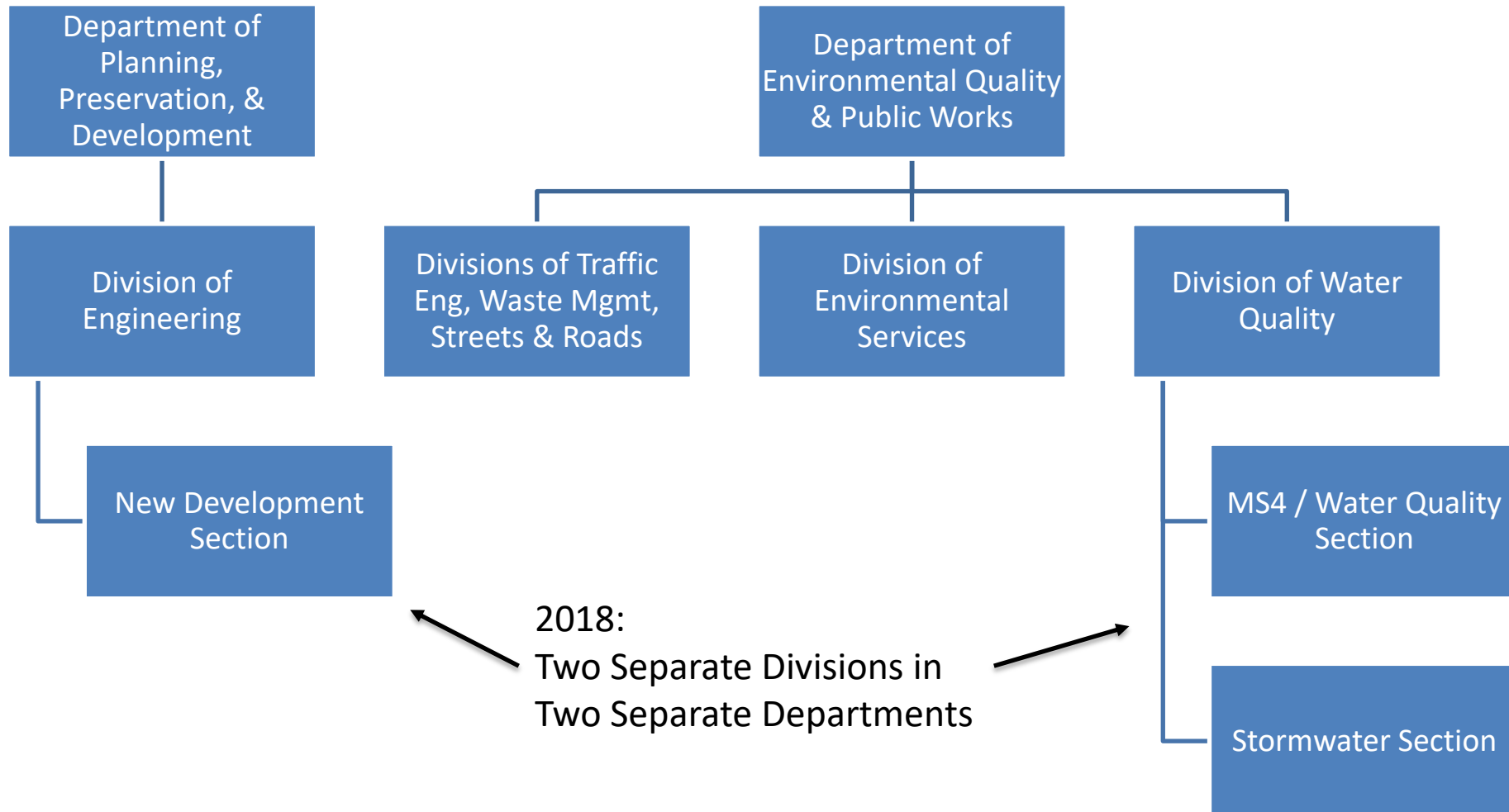
April 13, 2018



LEXINGTON



Why is BMP management a challenge?





LFUCG Divisions Involved

- Division of Engineering – New Development Section
 - Plan Review
 - Permitting – Issues Land Disturbance Permits
 - Inspection During Construction – Infrastructure, including stormwater controls
 - Compliance – Issues NOVs



LFUCG Divisions Involved

- Division of Water Quality
 - Inspection During Construction by Compliance & Monitoring Section – ESC BMPs Monthly
 - Inspection of Post-Construction BMPs by MS4 / Water Quality Section – Monthly, Quarterly, Twice Yearly, Annually
 - Compliance – Both Sections Issue
 - Verbal Warnings
 - Informal Notices
 - NOVs



LFUCG Divisions Involved

- Division of Environmental Services
 - Enforcement – if DOE and DWQ compliance efforts are ignored



Begin with the End in Mind

- *Coordination*
- Cooperation
- Communication



Monthly Coordination Meetings

LFUCG Stormwater Program Monthly Coordination Meeting

Division of Engineering

Division of Environmental Services

Division of Water Quality

Meeting Agenda

1. Old Business
2. New Business
3. Truant Basin List
4. Enforcement Issues – NOVs and Citations
 - a. Permanent Stormwater Controls
 - b. Erosion and Sediment Control
5. Other Topics
 - a. Sanitary sewer issues
 - b. Floodplain compliance
6. Review plans that are going before the Division of Planning Technical Committee

Note: Focus areas for 2017 are on page 2



Monthly Coordination Meetings

- Focus Areas
 - Abandoned ESC BMPs in Post-Construction Controls
 - ESC BMPs not converted to Post-Construction function
 - Protecting Post-Construction Controls during Construction



Begin with the End in Mind

- Coordination
- *Cooperation*
- Communication



Active Commercial Projects List

- Spreadsheet maintained by Engineering
- Sent to Water Quality at the beginning of each month
- Helps Water Quality keep tabs on when to expect Project Closeout



Begin with the End in Mind

- Coordination
- Cooperation
- *Communication*



Sureties Set to Expire

- Sureties held / managed by Engineering
- Next month's expiration list sent to Water Quality at the beginning of the prior month
- Opportunity for Water Quality to let Engineering know if the Post-Construction Controls are in an acceptable condition or if the surety should be renewed



LEXINGTON

FOR MORE INFORMATION

www.lexingtonky.gov

Jennifer M. Carey, P.E.

MS4 / Water Quality Section Manager

jcarey@lexingtonky.gov

